

WINTER | 2025



# EDWARDS QUARTERLY

WHERE LOCALS LIVE





# We Want to Hear from You!

At Edwards Metropolitan District, we believe that effective communication is a two-way street, and your voice is important to us. Whether you're sharing your thoughts, ideas, concerns, or celebrating what makes our community special, we want to stay connected with you!

In addition to newsletters, e-blasts, and District events, we're excited to invite YOU to contribute to our upcoming newsletters and website by submitting your own photos! Do you have a favorite scenic shot of Edwards, a memorable community moment, or a project that highlights sustainable living? We'd love to feature your pictures!

Please send your photos, along with a brief description, to [magdalena@mwcpaa.com](mailto:magdalena@mwcpaa.com) or submit them through our [contact page](#).

For any other thoughts or feedback, you can also reach us by phone at 970-926-6060 ext. 107. Your input and creativity help us serve the community better and showcase what makes Edwards such a wonderful place to live!

## INDEX

- LETTER FROM THE BOARD, PAGE 3
- FIREWISE AND ELECTIONS, PAGE 4
- 2025 BUDGET, PAGE 5
- EDWARDS ICE RINK OPENING, PAGE 6
- SNOW PLOWING IN EDWARDS, PAGE 7
- REBATES FOR GREENER REWARDS, PAGE 8

### Board of Directors

JOANNA KERWIN  
President

TODD WILLIAMS  
Vice President

MIKE TRUEBLOOD  
Treasurer

TRACY ERICKSON  
Secretary

KRIS MILLER  
Assistant Secretary

### STAFF

KEN MARCHETTI  
District Accountant  
[ken@mwcpaa.com](mailto:ken@mwcpaa.com)

MAGDALENA GEMBAL  
District Account Manager  
[magdalena@mwcpaa.com](mailto:magdalena@mwcpaa.com)



## EDWARDS METRO DISTRICT

# A Letter from the Board

Dear Edwards Metro District Residents,

As snow blankets our beautiful community and the ski season is in full swing, we're excited to share updates and highlights in this second edition of the Edwards Quarterly.

Reflecting on 2024, we are proud of what we have accomplished. Edwards Metropolitan District (EMD) has worked tirelessly to complete several impactful projects that will benefit our community for years to come. Among the most significant were the \$4.3 million Hillcrest Drive Roundabout, a collaboration with Eagle County, and the \$2.2 million Edwards Village Boulevard Sidewalk Project.

Additionally, we installed pedestrian lighting in the Miller Ranch

area to improve safety, and we added flashing pedestrian-activated crosswalk beacons at key roundabouts throughout EMD. We're also particularly proud of the Waterwise Demonstration Garden, a partnership with the Eagle River Coalition. Located west of Riverwalk, this garden showcases sustainable landscaping that relies solely on natural rainfall, offering a glimpse into what's possible with water-efficient practices.

Looking ahead to 2025, we've adopted a conservative budget. While we don't have any large capital projects on the horizon, we've set aside a \$500,000 contingency for pedestrian safety improvements. The 2025 budget also reflects our continued commitment to fire safety. We've doubled our contribution to

Eagle Valley Wildland, allocating \$100,000 to support community-driven wildfire mitigation efforts. In addition, the second annual residential chipping program will return with expanded services, and we will be introducing home assessments to better protect your properties.

On May 6, we will hold an election for two seats on our five-member Board of Directors. Serving on the Board is a meaningful way to give back to our community, and we encourage anyone interested to run. Board members serve four year terms. For more information, please contact our District Administrator, Magdalena Gembal, at 970-926-6060 x107 or [magdalena@mwcpaa.com](mailto:magdalena@mwcpaa.com).

Edwards Metropolitan District functions as the de facto government in the unincorporated greater Edwards area, which is home to approximately 8,000 residents. The District operates under its Service Plan and Operation Plan, which outline its responsibilities in key areas such as streets, drainage, traffic signalization, parks, recreation, and more. For a detailed look at these guiding documents, please visit the [EMD Service Plan and Operation Plan](#).

We hold monthly Board meetings on the third Thursday of every month at 12:00 p.m. in the Community Room at the Edwards Field House (450 Miller Ranch Rd). A Zoom option is also available for those unable to attend in person.

Finally, we want to hear from you. If you have ideas on how we can improve the services we provide or address issues affecting our community, please reach out [here](#).

Warm regards,  
*Joanna Kerwin*

PRESIDENT, EDWARDS METROPOLITAN DISTRICT

# Edwards Earns Firewise Certification

Edwards Metropolitan District is proud to announce its recent recognition as a Firewise USA® community by the National Fire Protection Association (NFPA). This certification highlights the District's commitment to wildfire risk reduction and community safety, which began in 2024 with a \$50,000 investment and a partnership with Eagle Valley Wildland.

The Firewise USA® program is a voluntary initiative that encourages residents to work together to reduce the risk of wildfires impacting their neighborhoods. The primary goal is to prevent wildland fires from spreading to homes and structures in the community. Achieving this certification required proactive steps, including the creation of defensible spaces around homes, proper landscaping to minimize fire risk, and ongoing community education on wildfire preparedness and safety.

This certification acknowledges both the work already completed



Fire Management Officer Hugh Fairfield-Smith and Tim Swaner with Eagle Valley Wildland present at the November EMD Meeting the Firewise Certification.

and the District's commitment to ongoing wildfire mitigation efforts. Actions taken by residents and the District—such as clearing vegetation, using fire-resistant building materials, and staying informed

about wildfire risks—have all contributed to this milestone.

Being a Firewise-certified community brings additional benefits beyond safety. It raises awareness about wildfire risks, fosters a stronger sense of preparedness among residents, and may even provide opportunities for reduced insurance premiums for homeowners.

We are proud to celebrate this achievement as a community and encourage continued efforts to maintain and enhance the measures that have led to this recognition. Together, we are making Edwards a safer and more resilient place to live.

Moreover, starting in 2025, the program will expand to include home assessments for all houses within EMD. These assessments will be conducted on a three-year rotation, with neighborhoods scheduled accordingly. More information will be shared later this year, including specific neighborhood schedules.

## Edwards Metropolitan District Board Seat Elections

On May 6, 2025, two of the five seats on the Board of Directors for the Edwards Metropolitan District will be up for election. The Board meets monthly on the third Thursday to provide policy direction and guidance to District administration.

The two seats up for election are currently held by Joanna Kerwin and Tracy Erickson. The candidates receiving the highest votes in the election will serve four-year terms.

If you are interested in running for a seat, please note the following deadlines:

Self-nomination petitions are due by February 28, 2025, at 4:30 p.m.

Write-in candidate affidavits are due by March 3, 2025, at 4:30 p.m.

For more information, contact District Administrator Magdalena Gembal at [magdalena@mwcpaa.com](mailto:magdalena@mwcpaa.com).

To qualify as a Director of a special district, candidates must be a registered voter in Colorado and meet one of the following criteria:

1. Be a resident of the District, or
2. Be the owner (or spouse/civil union partner of the owner) of taxable real or personal property situated within the District, including individuals under contract to purchase taxable property.

## EDWARDS METROPOLITAN DISTRICT

# 2025 Budget Overview

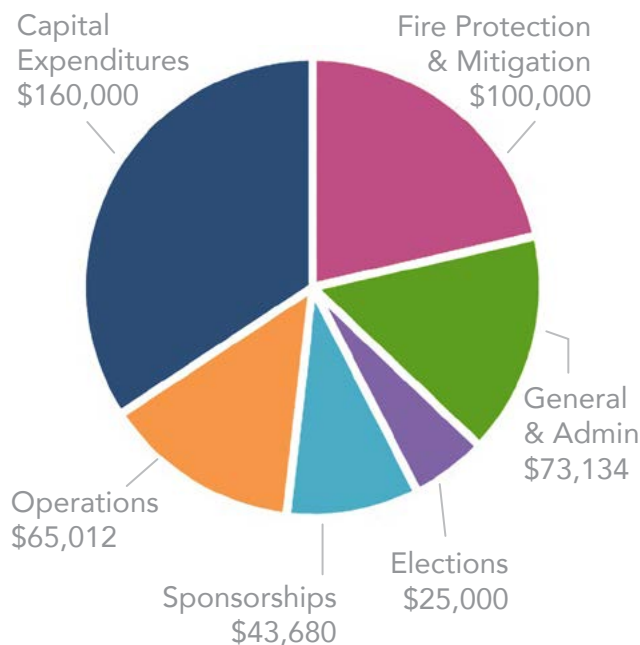
The Edwards Metropolitan District's 2025 budget reflects a more conservative approach compared to 2024, focusing on maintaining essential services while preparing for future needs. The District's funding comes from two main sources: the General Fund and the Sales Tax Fund.

The General Fund, supported by property taxes with a mill levy of 1.691, is projected to generate approximately \$483,000 in revenue for 2025. Expenditures, including operational and capital expenses, are expected to total \$467,000. This includes a \$50,000 increase in funding for fire mitigation efforts and up to \$25,000 allocated for election-related costs.

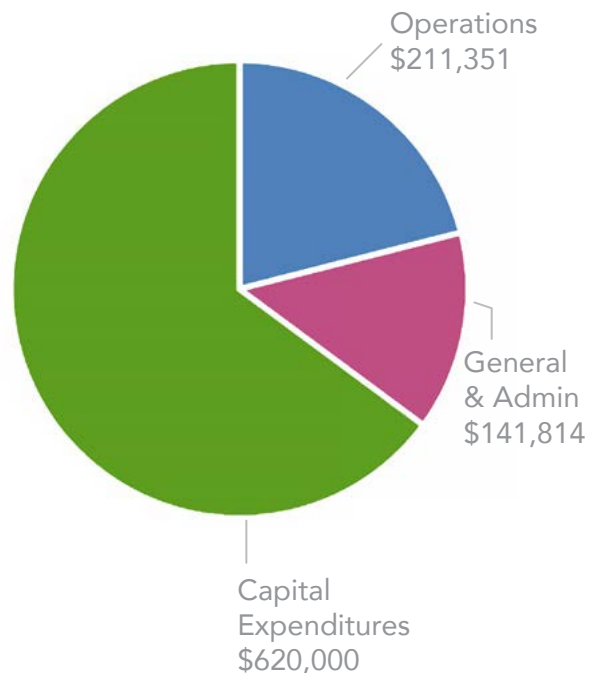
The Sales Tax Fund, generated from a 1% sales tax within the District, is dedicated to roadway and pedestrian-related projects, such as roundabout landscaping and sidewalk improvements. For 2025, the fund is expected to generate \$1,808,000 in revenue, with planned expenditures of \$1,005,000. Additionally, a \$500,000 contingency is reserved for future sidewalk or pedestrian safety projects.

Unlike 2024, which focused on significant capital investments like the \$2.2 million sidewalk project and the \$4.3 million Hillcrest Drive roundabout, the 2025 budget emphasizes maintaining flexibility while continuing to prioritize infrastructure and community needs.

### GENERAL FUND EXPENDITURES



### SALES TAX FUND EXPENDITURES





Skaters take to the ice on Mountain Recreation's seasonal ice rink in Edwards.

PHOTO COURTESY MOUNTAIN RECREATION METROPOLITAN DISTRICT

## Edwards ice rinks opening for holiday

Tired of lift lines and crowds but still want to get out and have some winter fun outdoors?

You may want to lace up the skates and hit the newly frozen Edwards ice rinks outside the Edwards Field House on the turf field. It's free.

The facilities provide outdoor activities for kids and adults looking for fun and to burn off some energy. While operated by volunteers, and headed by resident Tom Boyd, the cost of maintaining the rinks is carried jointly by the Vail Mountaineers Hockey Club and Mountain Recreation and has been supported by a number of organizations in the community.

The two rinks- one for casual skating and one with nets for hockey enthusiasts- are maintained by a small Zamboni built into a golf cart.

If you don't have skates, free skates are available on a first-come, first-serve basis, and are located in storage boxes in the dugouts of the nearby baseball field. Supplies are limited.

The rinks have been popular with nearby high school students and with adults.

Maintenance of the rinks is carried out entirely by volunteers. If you'd like to help, contact Mountain Recreation to volunteer at [HERE](#). Bring warm weather clothes capable of withstanding ice and water.





# Snow Plowing in Edwards

As winter settles in, ensuring safe and efficient snow removal is a top priority. Edwards Metropolitan District partners with multiple agencies to keep roads, sidewalks, and paths clear. Here's what you need to know this season:

## Who Does What?

- CDOT: Handles highways and interstates, including broad clearing operations.
- Eagle County Road & Bridge: Clears county roads, focusing first on main routes and high-traffic areas.
- ECO Trails: Maintains certain sidewalks, trails, and recreational paths.
- EMD: Oversees sidewalks and paths in District-managed areas to ensure safe pedestrian and cyclist use.

## What Residents Should Know

- **Your Responsibility:** Snow on private driveways and roads must be cleared by property owners. Avoid pushing snow onto public roads—it's prohibited by Colorado law.
- **Timing Matters:** Clear your sidewalks within 24 hours of snowfall to keep pathways accessible.
- **Parking Tips:** Avoid parking on streets during storms to help snowplows do their job efficiently.

## Need Assistance?

- For county road issues, contact Eagle County Road & Bridge at 970-328-3540 or visit [here](#) for more information.
- For EMD-maintained areas, [contact us](#)

Let's all do our part to ensure a safe and smooth winter season in Edwards!

# REBATES FOR A GREENER EDWARDS

To help residents save money and live sustainably, Edwards Metropolitan District is offering a number of rebate programs to promote water conservation, and green transportation. Here's a quick overview of the available rebate programs:

## 1

### E-BIKE REBATES

Switch to a clean and energy-efficient way of getting around town with an electric bike!

**WHAT:** Get a rebate on the purchase of an e-bike, helping you reduce your carbon footprint while enjoying the scenic routes of Edwards.

**HOW MUCH:** up to \$200 for qualifying residents limit of 2 per household).

**HOW TO APPLY:** Visit the E-Bike Rebate Application to learn more and apply.

## 2

### WATER EFFICIENCY REBATES

Save water and money with our water efficiency rebates!

**WHAT:** Rebates are offered for irrigation system upgrades, smart irrigation controllers and irrigation evaluations.

**HOW MUCH:** vary depending on the equipment installed.

**HOW TO APPLY:** To explore all qualifying products and apply for rebates, visit the Water Efficiency Rebate Page.

By taking advantage of these rebates, you'll not only reduce your utility bills but also contribute to a cleaner, greener future for Edwards.

Don't miss out on these fantastic opportunities!

Check all of these rebates [HERE](#).



**EDWARDS**  
COLORADO